



# Field Caddie™ Assembly Manual

Field Caddie™ hose cart ships in two boxes which will contain all of these parts.

Field Caddie Frame (1)



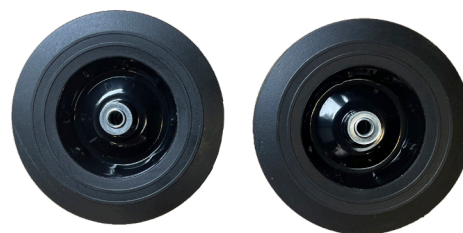
Axle Shaft Collars (2)



Reel Bolt Kit (1)



Wheels (2)



Hose Caddie Reel (1)



Leader Hose (1)



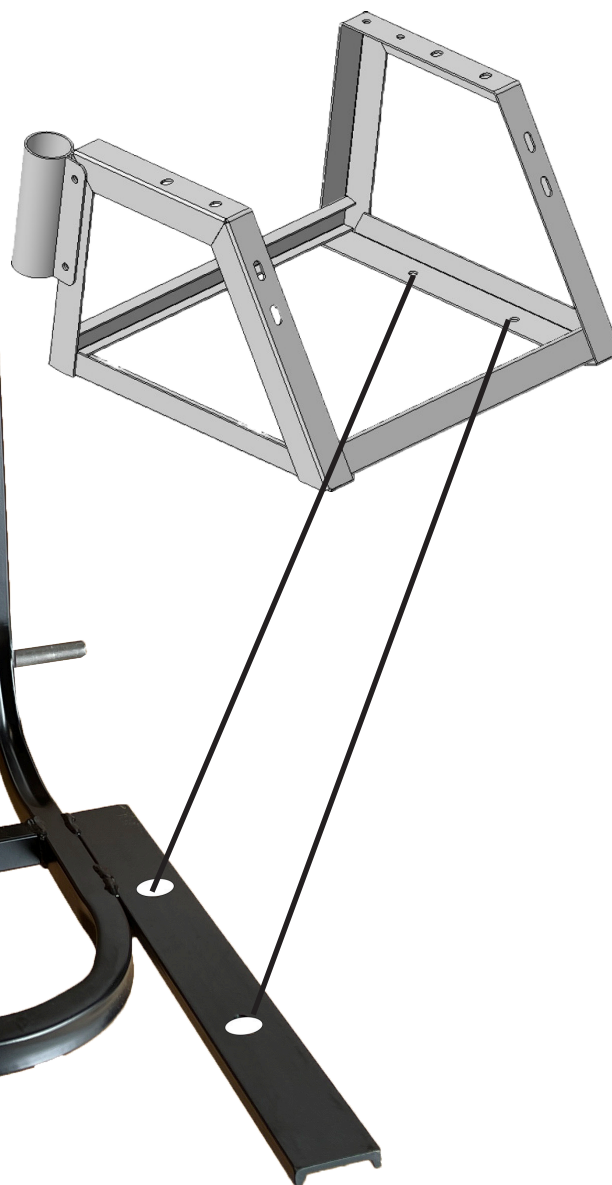
Form # LIT-HC-HT



# Field Caddie™

## Assembly Instructions

Step 1- Mount Hose Caddie Reel to Field Caddie Frame by aligning the four pre-drilled holes in reel with the four pre-drilled holes in the frame. Use reel bolt kit for hardware.



Step 2- Mount wheels to Field Caddie frame using axle shaft collars to secure wheel in place.



Questions on Assembly?

Contact Underhill Tech Support  
949-305-7050



# Field Caddie™

## PARTS LIST

<b>HC-TRL-TOOL</b>	Hose Caddie Add On Tool Box, Fits Course Caddie or Field Caddie, Includes Mounting Hardware
<b>HC=HT</b>	Replacement Part - Field Caddie Frame Only
<b>H-CAP</b>	Replacement Part - Plastic Tube Plug for Field Caddie Hand Truck (Requires 2 Per Unit)
<b>H-COLLAR</b>	Replacement Part - Axle Collar for Field Caddie Hose Cart (Requires 2 per Cart)
<b>H-WHEEL</b>	Replacement Part - Solid Rubber Wheel For Field Caddie Hose Cart, 10" x 2" (Requires 2 per Cart)
<b>HC-TRL-HDWR</b>	Replacement Part - Hardware Kit For Field Caddie Trailer, Includes 4 Bolts, 8 Washers, 4 Lock Washers and 4 Nuts
<b>HC-TOOL-HDWR</b>	Replacement Part - Hardware Kit to Mount Tool Box to Course Caddie or Field Caddie



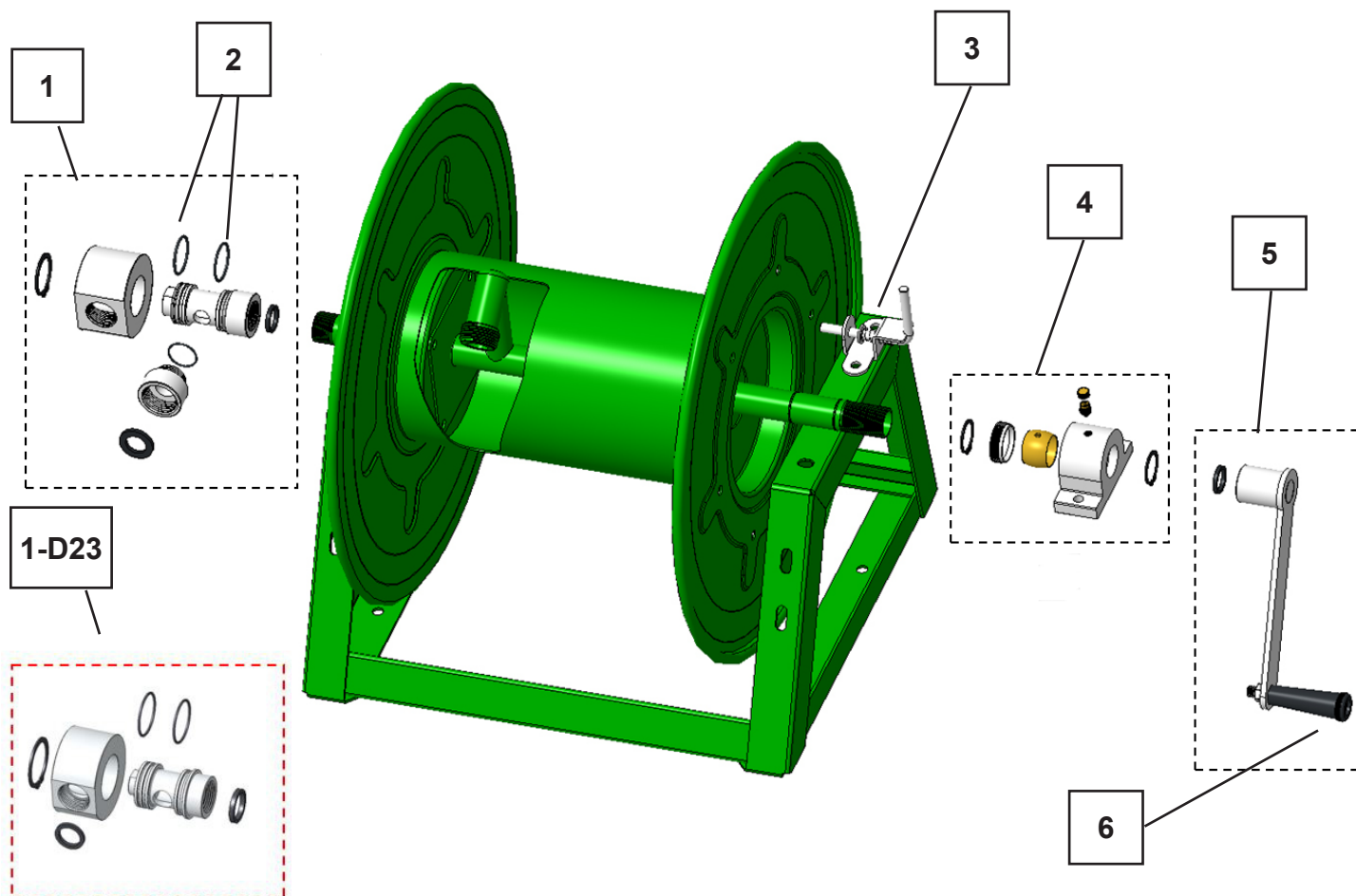
**TO CONTACT UNDERHILL INTERNATIONAL**

**UNDERHILL.US**  
**949-305-7050**  
**UNDERHILL@UICORP.NET**



## HOSE CADDIE REEL PARTS MANUAL

ITEM	PART NUMBER	DESCRIPTION
1	HC-ISA	Inlet swivel assembly - 2022 model
1-D23	HC-ISA-D23	Inlet swivel assembly - 2024 & newer models
2	HC-ISOR	Inlet swivel assembly o-rings only - 2022 model
2	HC-ISOR-D23	Inlet swivel assembly o-rings only - 2024 & newer models
3	HC-RL	Reel lock assembly - all models
4	HC-RSB	Reel shaft bearing assembly (left or right side) - 2022 model
4	HC-RSB-D23	Reel shaft bearing assembly (left or right side) - 2024 & newer models
5	HC-CA	Crank assembly - 2022 model
5	HC-CA-D23	Crank assembly - 2024 & newer models
6	HC-CH	Crank handle only - 2022 model
6	HC-CH-D23	Crank handle only - 2024 & newer models



underhill.us

949-305-7050